

# ELECTRIC ACTUATOR SA 05 + PCU

## MAIN CHARACTERISTICS

The electric actuator SA 05 PCU is intended for the motorization of ¼ turn valves for industrial purpose. The operating torque is 50 Nm. Of compact and sturdy construction with aluminum case epoxy IP67, The actuator SA is particularly well adapted to the motorization of painted ball and butterfly valves installed in workshop or outside. The SA 05 PCU is provided with a manual device by key and with a 3D visual indicator of position. Functioning 3 points. Proportional control 4-20mA. it is in accordance with the standard EN 15714-2.

## AVAILABLE MODELS

Voltages of supply : 230V CA (50-60Hz), 24V CA/CC

## LIMITS OF USE

Indication of protection	IP 67
Room temperature	- 20°C / +70°C
Duty Factor	S2-70%



## MECHANICAL CHARACTERISTICS

Gear	Steel cogs handled
Torque	50 Nm
Angle of rotation	90° +/- 5°
Declutch	Without
Manual override	By key



Actuator	SA 05 + PCU	
Voltage	230V CA	24V CA/CC
Torque (Nm)	50	
Time of operation (s)	17	17
ISO 5211	F03/F05/F07 Star 14	

## ELECTRIC CHARACTERISTICS

Protection of the motor	Thermal regulation	Resistance heater	resistance 2W
Limit swithes	2 adjustable swithes	Electric connecting	2 x P.E. M20x1.5
Auxiliary swithes	2 adjustable dry swithes		

Actuator	SA 05 + PCU	
Voltages	230V CA	24V CA/CC
Power consumption (W)	6 W	15 W
Intensity (A)	0,24	1,8

Modifications reserved



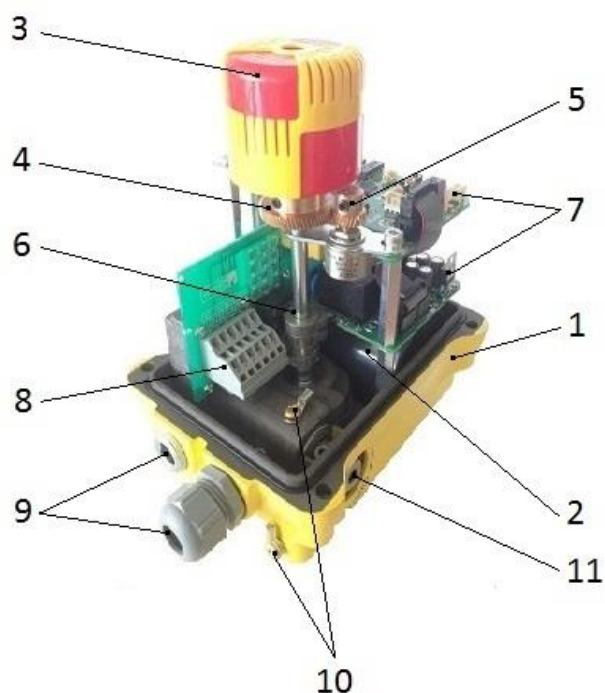
SECTORIEL S.A.  
45, rue du Ruisseau  
38290 SAINT QUENTIN-FALLAVIER – FRANCE  
Tél : +33 4 74 94 90 70 - Fax : +33 4 74 94 13 95  
[www.sectoriel.fr](http://www.sectoriel.fr) / Email : [sectoriel@sectoriel.fr](mailto:sectoriel@sectoriel.fr)

Pages	1/5
Ref.	FT23050 ENG
Rev.	06
Date	05/2019

# ELECTRIC ACTUATOR SA 05 + PCU

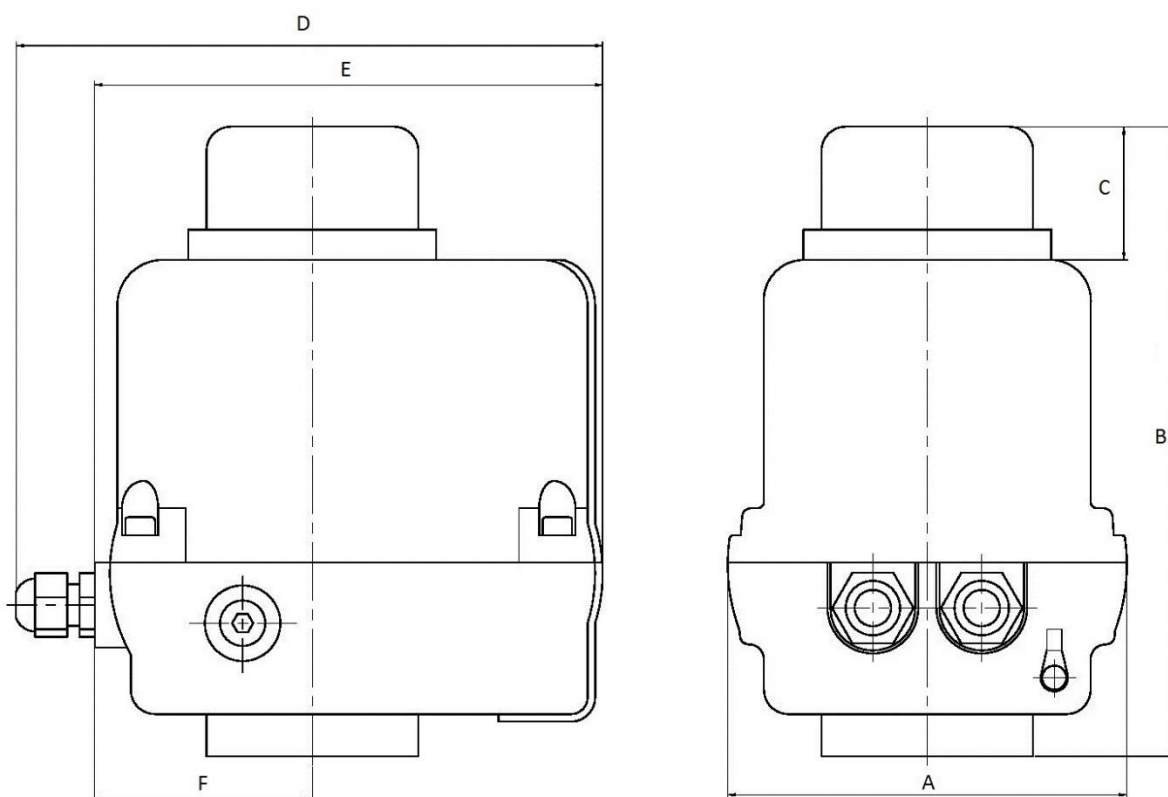
## CONSTRUCTION

N°	Item
1	Housing
2	Electric motor
3	Position indicator
4	Wheel
5	Potentiometer of copy
6	Cams
7	Regulation PCB
8	Terminal block
9	Cables entrances
10	Earthing
11	Manual override



## DIMENSIONS (mm) AND WEIGHT (kg)

Dimensions (mm)	A	B	C	D	E	F	Weight (Kg)
SA 05 + PCU	132	208	44	194	168	72	4



Modifications reserved



SECTORIEL S.A.  
 45, rue du Ruisseau  
 38290 SAINT QUENTIN-FALLAVIER – FRANCE  
 Tél : +33 4 74 94 90 70 - Fax : +33 4 74 94 13 95  
[www.sectoriel.fr](http://www.sectoriel.fr) / Email : sectoriel@sectoriel.fr

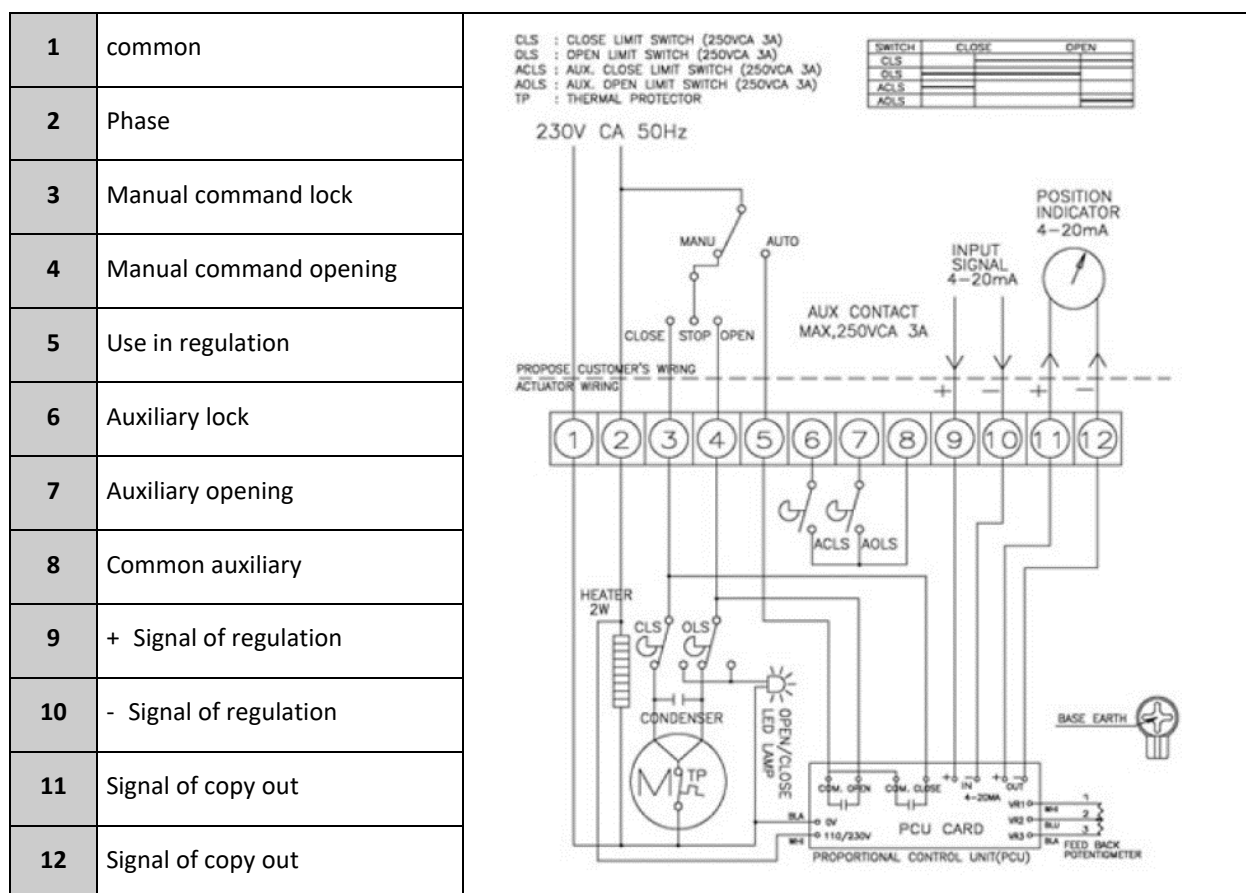
Pages	2/5
Ref.	FT23050 ENG
Rev.	06
Date	05/2019

# ELECTRIC ACTUATOR SA 05 + PCU

## SIGNALS OF REGULATION

Input signals	Signals of copy
0 - 5 V	4 - 20 mA
0 - 10 V	
2 - 10 V	
1 - 5 V	
4 - 20 mA	

## WIRING DIAGRAM 230V CA 50Hz



Modifications reserved

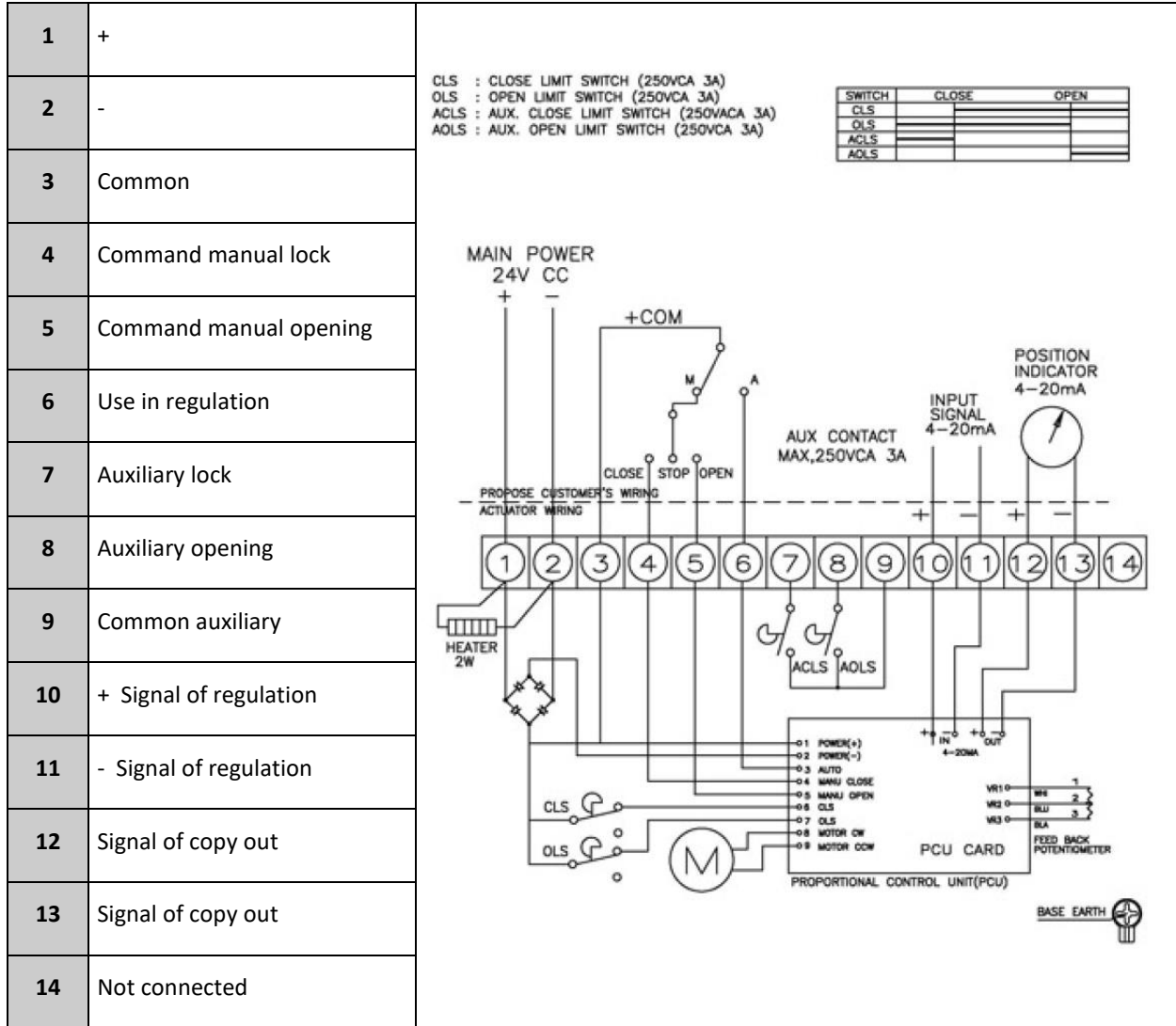


SECTORIEL S.A.  
 45, rue du Ruisseau  
 38290 SAINT QUENTIN-FALLAVIER – FRANCE  
 Tél : +33 4 74 94 90 70 - Fax : +33 4 74 94 13 95  
[www.sectoriel.fr](http://www.sectoriel.fr) / Email : sectoriel@sectoriel.fr

Pages	3/5
Ref.	FT23050 ENG
Rev.	06
Date	05/2019

# ELECTRIC ACTUATOR SA 05 + PCU

## WIRING DIAGRAM 24V CA/CC



Modifications reserved



SECTORIEL S.A.  
 45, rue du Ruisseau  
 38290 SAINT QUENTIN-FALLAVIER – FRANCE  
 Tél : +33 4 74 94 90 70 - Fax : +33 4 74 94 13 95  
[www.sectoriel.fr](http://www.sectoriel.fr) / Email : sectoriel@sectoriel.fr

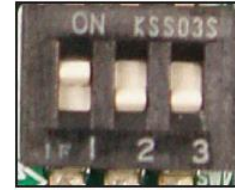
Pages	4/5
Ref.	FT23050 ENG
Rev.	06
Date	05/2019

# ELECTRIC ACTUATOR SA 05 + PCU

## PCU BOARD SPECIFICATION

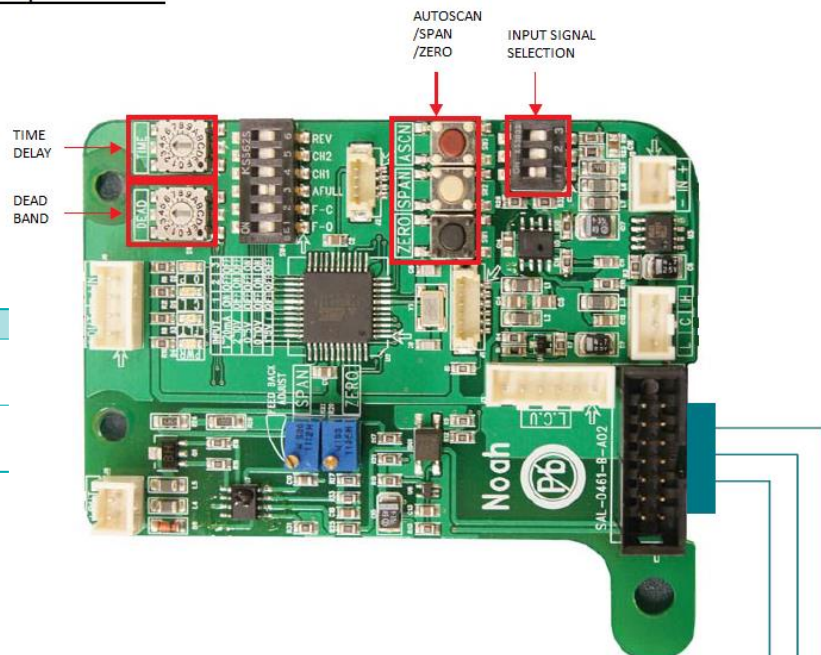


Name	Spec.
ZERO	Close manual control button / Input module button
SPAN	Open manual control button / Input module button
ASCN	AUTO SCAN BUTTON (ACTUATOR automatic control button) delivered from the factory the resistance value of potentiometer may can be changed if the user modifies its limit setting. Please make sure to press the autoscan button for at least 2 seconds before operating proportional control.



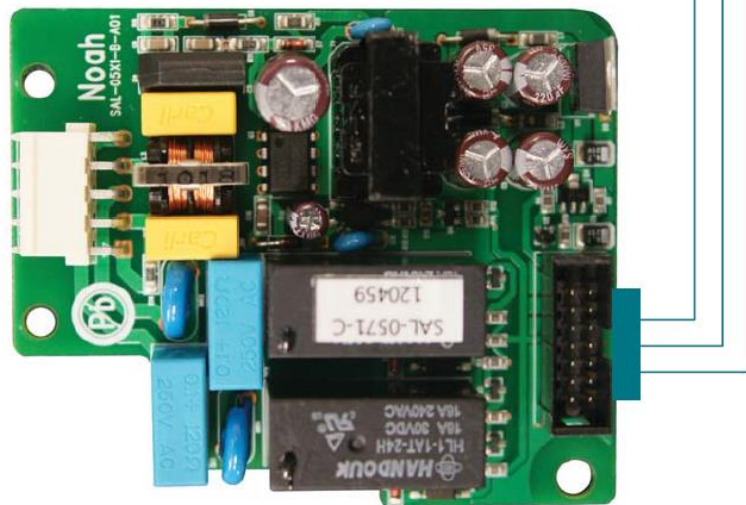
INPUT	S/W	1	2	3
4-20mA		ON	OFF	OFF
2-10V		OFF	ON	OFF
0-5V		OFF	OFF	ON
0-10V		OFF	ON	ON
1-5V		OFF	OFF	OFF

## PCU Board specification



Name	Spec.
DEAD BAND	Mechanical steps at least (0,2ma)
TIME DELAY	Modulating starting time (1sec)

## PCU Board



Modifications reserved



SECTORIEL S.A.  
 45, rue du Ruisseau  
 38290 SAINT QUENTIN-FALLAVIER – FRANCE  
 Tél : +33 4 74 94 90 70 - Fax : +33 4 74 94 13 95  
[www.sectoriel.fr](http://www.sectoriel.fr) / Email : sectoriel@sectoriel.fr

Pages	5/5
Ref.	FT23050 ENG
Rev.	06
Date	05/2019