

SR + SR-X ELECTRIC ACTUATOR WITH SPRING RETURN

FEATURES

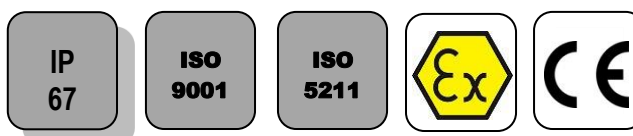
The SR electric actuator is intended for motorising ¼ turn valves with a safety function by lack of current. Under normal operation, valve operation is provided in both direction via the electrical motor. Cutting-off the electrical power supply activates the instantaneous closing (or opening) of the valve provided by the movement of the return spring. The torque is 300 Nm maximum. With a robust construction and IP67 epoxy-coated aluminium housing, the SR actuator is especially well suited for motorising ball valves and butterfly valves installed in workshops or outdoors. SR has a manual override by hand wheel and a 3D visual position indicator. The SR-X version can be used in the explosive atmospheres 1 and 2.

AVAILABLE MODELS

SR05-SR05X/SR10-SR10X/SR30-SR30X: 230V AC (50-60Hz).

LIMITS OF USE

IP Code	IP 67
Ambient temperature	- 20°C / + 55°C
Service factor	S2 – 15 minutes
Installation	Only vertically Actuator above the valve



SR-X version

ATEX APPROVAL of the SR-X MODEL

Protection mode	“d” according to the EN 60079-1 standard
Category of material	2
Explosive atmospheres	1 and 2
Marking	II 2 G Ex d IIB T4 (ON KEMA no. 0344)
Class of temperature	T4

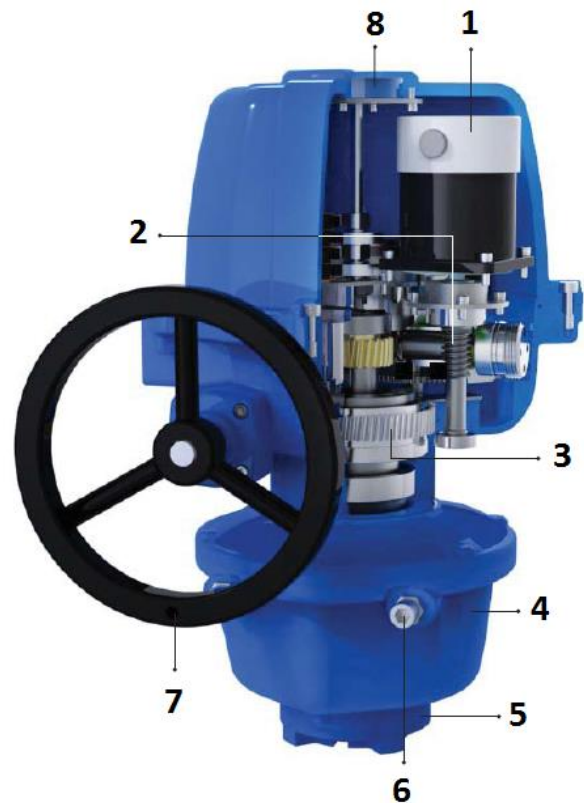
Information given as an indication only, and subject to possible modifications

	SECTORIEL S.A. 45 rue du Ruisseau 38290 SAINT QUENTIN-FALLAVIER – FRANCE Telephone: +33 4 74 94 90 70 – Fax: +33 4 74 94 13 95 www.sectoriel.fr / Email : sectoriel@sectoriel.fr	Pages	1/5
	Ref.	FT23080 ENG	
	Rev.	07	
	Date	09/2017	

SR + SR-X ELECTRIC ACTUATOR WITH SPRING RETURN

CONSTRUCTION

1	Electrical motor	Polyester-coated aluminium
2	Worm drive	Treated steel
3	Planetary gear box	Treated steel
4	Spring box	Polyester-coated aluminium
5	Attachment base	Polyester-coated aluminium
6	Adjustable stops	Stainless steel
7	Emergency wheel	Steel
8	Position indicator	Safety glass



MECHANICAL FEATURES

Gear box	treated steel pinions					
Override control	by wheel					
Spring box lubrication	Shell Gadus S2 V220-2					
Angle of rotation	90° +/- 5°					
Torque limiter	2 adjustable, external mechanical stops					
Declutching	electromagnetic					
Type	SR 05 / SR 05X		SR 10 / SR 10X		SR 30 / SR 30X	
Torque	50 Nm		100 Nm		300 Nm	
Number of turns override wheel	25 turns		25 turns		113 turns	
ISO 5211 valve connection	F07 star 14		F07 / F10 star 17		F10 / F12 star 22	
Weight (kg)	26	31	35	40	62	67

Information given as an indication only, and subject to possible modifications



SECTORIEL S.A.
45 rue du Ruisseau
38290 SAINT QUENTIN-FALLAVIER – FRANCE
Telephone: +33 4 74 94 90 70 – Fax: +33 4 74 94 13 95
www.sectoriel.fr / Email : sectoriel@sectoriel.fr

Pages	2/5
Ref.	FT23080 ENG
Rev.	07
Date	09/2017

SR + SR-X ELECTRIC ACTUATOR WITH SPRING RETURN

ELECTRICAL FEATURES

Motor protection	Thermal	Anti-condensation	20 W heater
Limit switches	2 adjustable switches	SR electrical connection	2 x C.G M20x1.5
Auxiliary switches	2 adjustable dry switches	SR-X electrical connection	2 x C.G M20x1.5 ATEX (NOT SUPPLIED on option)

Model	Spring return (90°)	Manoeuvring time electrical motor	
		230V AC	
		Opening/closing (s)	
		50 Hz	60 Hz
SR 05	1 s	16/14	13/12
SR 05X	1 s	16/14	13/12
SR 10	1 s	20/19	17/15
SR 10X	1 s	20/19	17/15
SR 30	2 ± 1 s	89/82	75/68
SR 30X	2 ± 1 s	89/82	75/68

Model	Holding current (A)		Inrush current (A)	
	230V AC		230V AC	
	50Hz	60Hz	50Hz	60Hz
SR 05	1/0.95	1.03/0.7	1.95	1.9
SR 05X	1/0.95	1.03/0.7	1.95	1.9
SR 10	1.06/0.98	1.3/0.9	02:55	2.5
SR 10X	1.06/0.98	1.3/0.9	02:55	2.5
SR 30	1.02/0.98	1.3/0.95	2.8	2.93
SR 30X	1.02/0.98	1.3/0.95	2.8	2.93



Important:

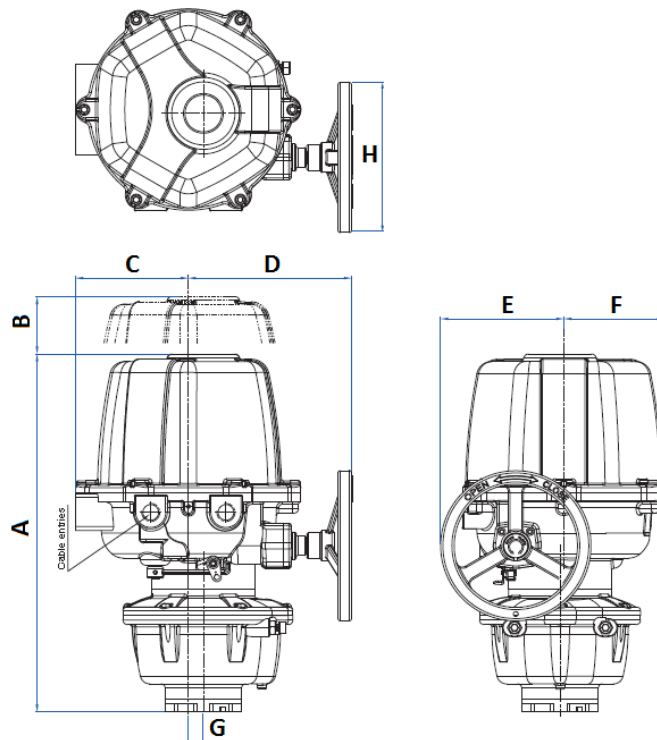
**Under normal operation : These motors have to be electrically controlled for opening or closing.
Spring activated return takes places only in case of power supply cut-off.**

Information given as an indication only, and subject to possible modifications

	SECTORIEL S.A. 45 rue du Ruisseau 38290 SAINT QUENTIN-FALLAVIER – FRANCE Telephone: +33 4 74 94 90 70 – Fax: +33 4 74 94 13 95 www.sectoriel.fr / Email : sectoriel@sectoriel.fr	Pages	3/5
		Ref.	FT23080 ENG
		Rev.	07
		Date	09/2017

SR + SR-X ELECTRIC ACTUATOR WITH SPRING RETURN

DIMENSIONS (mm)



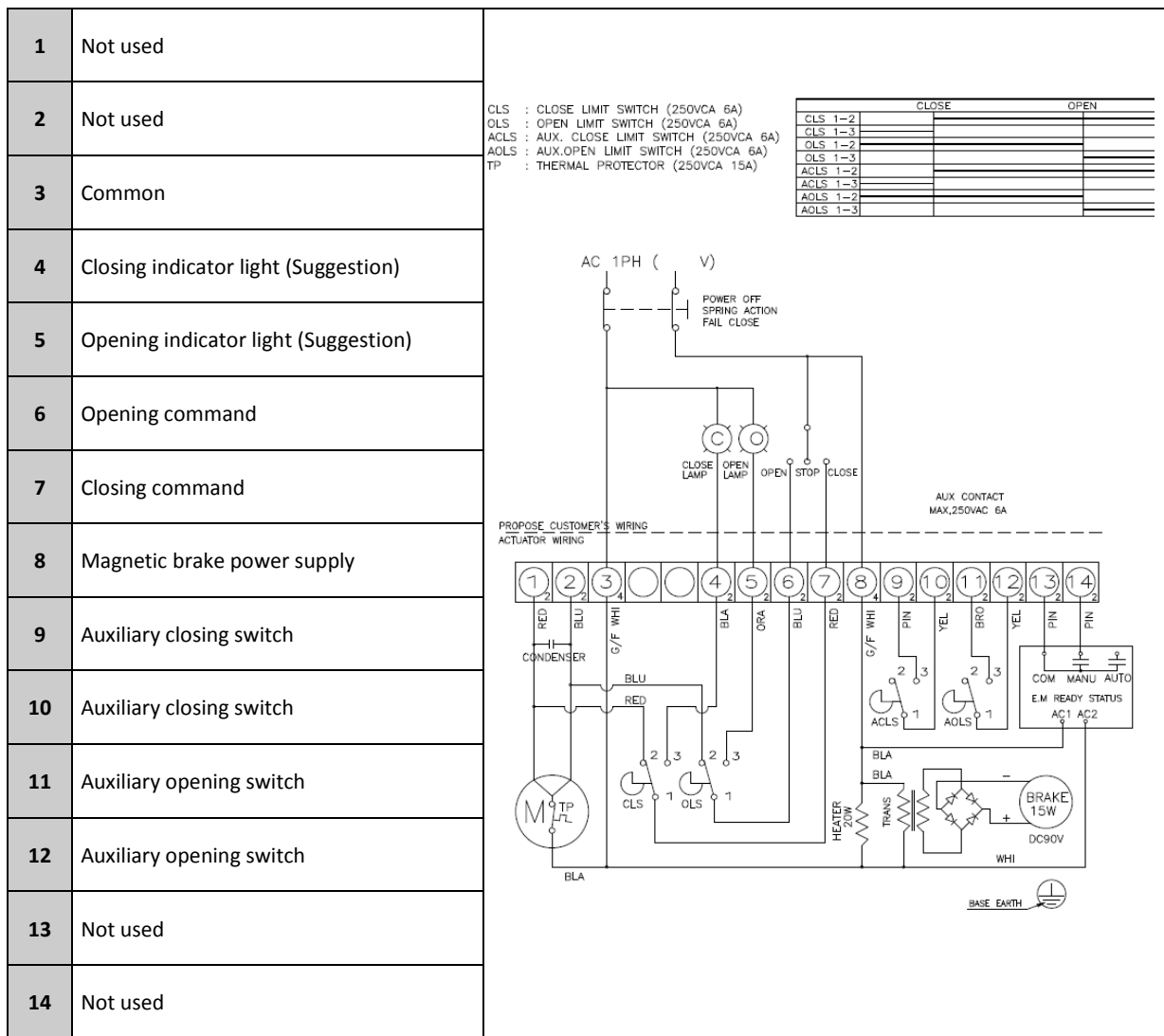
Model	A	B	C	D	E	F	G	H
SR 05	477	155	150	206	164	134	20	200
SR 05X	504	155	150	206	164	134	20	200
SR 10	498	212.5	156	208	172	141	22	200
SR 10X	526	212.5	156	208	172	141	22	200
SR 30	658.5	212.5	156	214	173	141	22	200
SR 30X	686.5	212.5	156	214	173	141	22	200

Information given as an indication only, and subject to possible modifications

	SECTORIEL S.A. 45 rue du Ruisseau 38290 SAINT QUENTIN-FALLAVIER – FRANCE Telephone: +33 4 74 94 90 70 – Fax: +33 4 74 94 13 95 www.sectoriel.fr / Email : sectoriel@sectoriel.fr	Pages	4/5
		Ref.	FT23080 ENG
		Rev.	07
		Date	09/2017

SR + SR-X ELECTRIC ACTUATOR WITH SPRING RETURN

WIRING DIAGRAM 230V AC



Information given as an indication only, and subject to possible modifications



SECTORIEL S.A.
 45 rue du Ruisseau
 38290 SAINT QUENTIN-FALLAVIER – FRANCE
 Telephone: +33 4 74 94 90 70 – Fax: +33 4 74 94 13 95
www.sectoriel.fr / Email : sectoriel@sectoriel.fr

Pages	5/5
Ref.	FT23080 ENG
Rev.	07
Date	09/2017