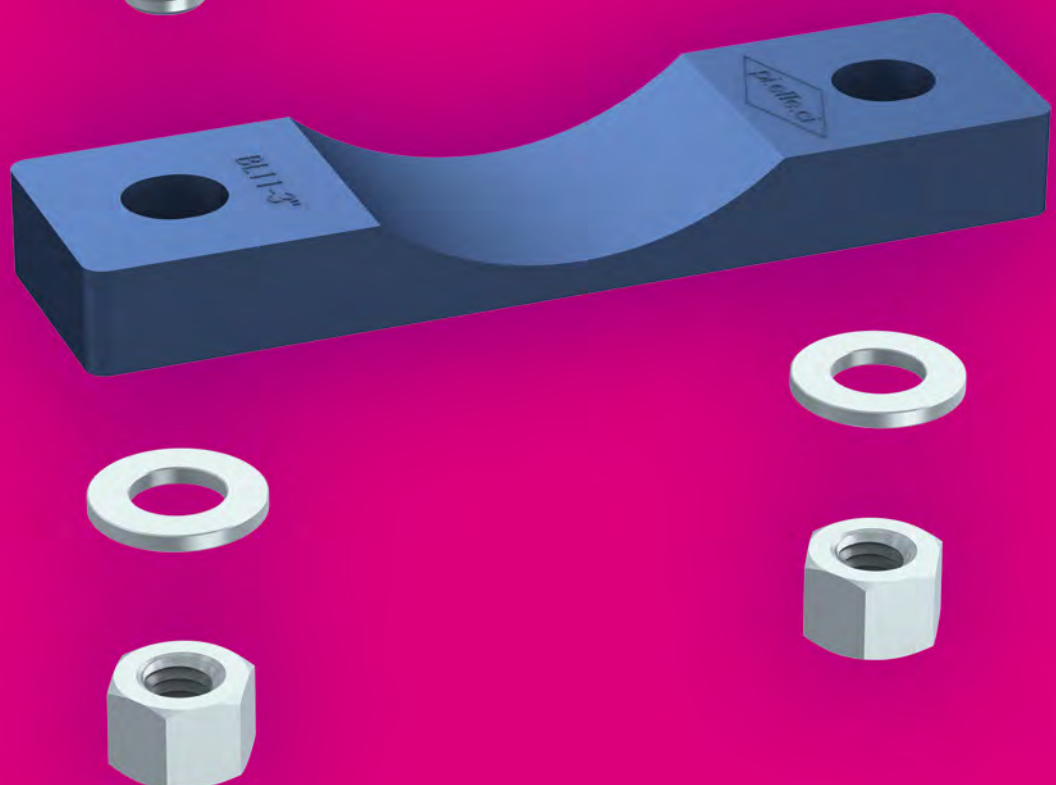


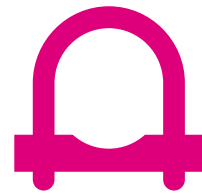


PIPE CLAMPS
U-BOLT SERIES

PIPE CLAMPS **U-BOLT SERIES**
Order Codes and Dimensions (mm/in)

122





PIPE CLAMPS U-BOLT SERIES

PIPE CLAMPS
U-BOLT SERIES

123

CLAMP BODY STANDARD MATERIALS



Carbon Steel S 275 JR
Finishing Zinc Plated
Code CL - CM - CP - CD - CQL - CQM - CQP - COR



Stainless Steel AISI 304L
Finishing Washed
Code XCL - XCP



Stainless Steel AISI 316L
Finishing Washed
Code XCM



Carbon Steel S 275 JR
Finishing Crapal
Code CZF



**Galvanized Hexavalent
Chromium-free Steel S 235 JR**
Code CFP

DIFFERENT DAMETERS AVAILABLE ON REQUEST.

For Material Characteristics, see Technical Appendix (page 143).

COMPONENTS AND ACCESSORIES STANDARD MATERIALS

Plastic pipe saddle (on request)
material Polypropylene (PP) or Polyamide (PA)

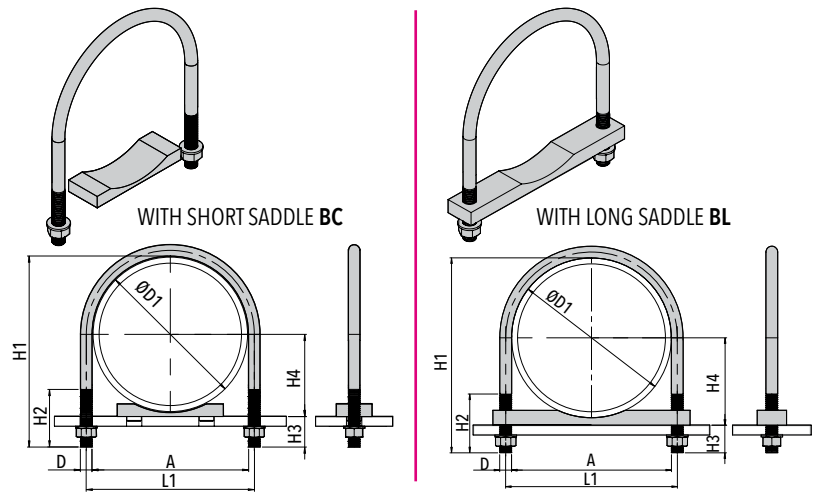
CL - CM - CP U-Bolts are supplied with 2 bolts and 2 washers.
CD U-Bolts are supplied with 4 nuts and 2 washers.
CFP U-Bolts are supplied with 2 nuts and 2 screws.

For Material Characteristics, see Technical Appendix (page 143).





ROUND U-BOLT



Code CL / CM / CP
(Material S275JRC - Finishing Zinc Plated)

Code CZF
(Material S275JRC - Finishing Crapal)

Code XCL / XCM
(Material AISI 304L - Finishing Washed)

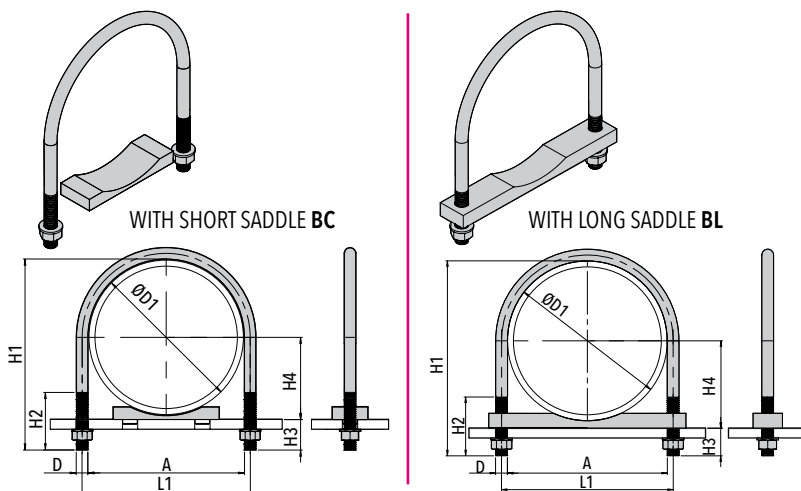
Code XCP
(Material AISI 316L - Finishing Washed)

O.D. ØD1		Nominal Diameter DN	Code	Thread D	A	L1	H1	H2	(DN 6-15 no saddle)	
nominal bore pipe	mm								H3	H4
1/8"	10 (.40")	6	CL 01	M6	11 (.43")	17 (.67")	31	19	21	5 (.20")
			CZF 01				(1.22")	(.75")	(.83")	
			XCL 01				29	16	19	
							(1.14")	(.63")	(.75")	
1/4"	13,5 (.53")	8	CL 02	M6	14 (.56")	20 (.78")	34	19	20,5	6,75 (.27")
			CZF 02				(1.34")	(.75")	(.81")	
			XCL 02				32	16	18,5	
							(1.26")	(.63")	(.73")	
3/8"	17,2 (.68")	10	CL 03	M6	18 (.70")	24 (.94")	37	19	19,8	8,6 (.34")
			CZF 03				(1.46")	(.75")	(.78")	
			XCL 03				36	16	18,8	
							(1.42")	(.63")	(.74")	
1/2"	21,3 (.84")	15	CL 04	M6	22 (.87")	28 (1.10")	43	25	21,7	10,65 (.42")
			CZF 04				(1.70")	(.98")	(.85")	
			XCL 04				40	18	18,7	
							(1.57")	(.70")	(.74")	
			CM 04	M8	22 (.87")	30 (1.18")	52	30	30,7	
			XCM04					48	25	26,7
			XCP 04				(1.89")	(.98")	(1.05")	
			CP 04	M10	22 (.87")	32 (1.26")	60 (2.36")	40 (1.57")	38,7 (1.52")	

O.D. ØD1		Nominal Diameter DN	Code	Thread D	A	L1	H1	H2	with BC		with BL				
nominal bore pipe	mm								H3	H4	H3	H4			
3/4"	26,9 (1.06")	20	CL 05	M6	27 (1.06")	33 (1.30")	47	25	15	15	18,45 (.73")	18,45 (.73")			
			CZF 05				(1.85")	(.98")	(.60")	(.60")					
						XCL 05				45	18	13,1	13,1		
							(1.77")	(.71")	(.52")	(.52")					
			CM 05	M8	27 (1.06")	35 (1.38")	56	30	24,1	24,1	18,45 (.73")	18,45 (.73")			
			XCM 05					52	25	20			20		
			XCP 05				(2.05")	(.98")	(.79")	(.79")					
			CP 05	M10	27 (1.06")	37 (1.46")	66 (2.60")	40 (1.57")	34,1 (1.34")	18,45 (.73")	34,1 (1.34")	18,45 (.73")			
1"	33,7 (1.33")	25	CL 06	M6	34 (1.34")	40 (1.57")	55	25	16,43	16,43	21,85 (.86")	21,85 (.86")			
			CZF 06				(2.17")	(.98")	(.65")	(.65")					
						XCL 06				52	18	13,3	13,3		
										(2.05")	(.71")	(.52")	(.52")		
						CM 06	M8	34 (1.34")	42 (1.65")	64	30	25,3	25,3	21,85 (.86")	21,85 (.86")
			XCM 06		60	25				21,3	21,3				
			XCP 06				(2.36")	(.98")	(.84")	(.84")					
			CP 06	M10	34 (1.34")	44 (1.73")	72 (2.83")	40 (1.57")	33,3 (1.31")	21,85 (.86")	33,3 (1.31")	21,85 (.86")			



ROUND U-BOLT



Code CL / CM / CP
(Material S275JRC - Finishing Zinc Plated)

Code CZF
(Material S275JRC - Finishing Crapal)

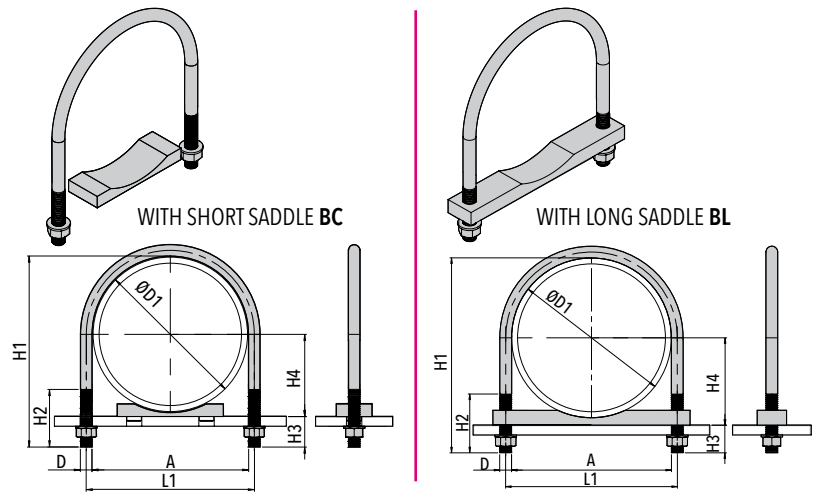
Code XCL / XCM
(Material AISI 304L - Finishing Washed)

Code XCP
(Material AISI 316L - Finishing Washed)

O.D. ØD1 nominal bore pipe	ØD1 mm	Nominal Diameter DN	Code	Thread D	A	L1	H1	H2	with BC		with BL				
									H3	H4	H3	H4			
1.1/4"	42,4 (1.69")	32	CL 07	M6	43 (1.70")	49 (1.93")	63 (2.48")	25 (.98")	15,46 (.61")	26,2 (1.03")	15,46 (.61")	26,2 (1.03")			
			CZF 07				61 (2.40")	18 (.71")	13,6 (.54")	13,6 (.54")					
			XCL 07	M8	43 (1.70")	51 (2.01")	72 (2.83")	30 (1.18")	24,6 (.97")	26,2 (1.03")	24,6 (.97")	26,2 (1.03")			
			CM 07				68 (2.68")	25 (.98")	20,6 (.81")	20,6 (.81")					
			XCM 07				M10	43 (1.70")	53 (2.08")	82 (3.23")	40 (1.57")	34,6 (1.36")	26,2 (1.03")	34,6 (1.36")	26,2 (1.03")
			XCP 07							68 (2.68")	25 (.98")	20,6 (.81")	20,6 (.81")		
1.1/2"	48,3 (1.90")	40	CL 08	M8	49 (1.93")	57 (2.24")	73 (2.87")	30 (1.18")	19,7 (.78")	29,15 (1.15")	19,7 (.78")	29,15 (1.15")			
			CZF 08				70 (2.76")	28 (1.10")	16,7 (.66")	16,7 (.66")					
			XCL 08	M10	49 (1.93")	59 (2.32")	82 (3.23")	40 (1.57")	28,7 (1.13")	29,15 (1.15")	28,7 (1.13")	29,15 (1.15")			
			CM 08				78 (3.07")	36 (1.42")	24,7 (.97")	24,7 (.97")					
			XCM 08				M12	49 (1.93")	61 (2.40")	100 (3.94")	60 (2.36")	46,7 (1.84")	29,15 (1.15")	46,7 (1.84")	29,15 (1.15")
			XCP 08							82 (3.23")	28 (1.10")	16,7 (.66")	16,7 (.66")		
2"	60,3 (2.41")	50	CL 09	M8	61 (2.40")	69 (2.72")	85 (3.35")	30 (1.18")	19,7 (.78")	35,15 (1.38")	19,7 (.78")	35,15 (1.38")			
			CZF 09				82 (3.23")	28 (1.10")	16,7 (.66")	16,7 (.66")					
			XCL 09	M10	61 (2.40")	71 (2.80")	94 (3.70")	40 (1.57")	28,7 (1.13")	35,15 (1.38")	28,7 (1.13")	35,15 (1.38")			
			CM 09				90 (3.54")	36 (1.42")	24,7 (.94")	24,7 (.94")					
			XCM 09				M12	61 (2.40")	73 (2.87")	112 (4.41")	60 (2.36")	46,7 (1.84")	35,15 (1.38")	46,7 (1.84")	35,15 (1.38")
			XCP 09							82 (3.23")	28 (1.10")	16,7 (.66")	16,7 (.66")		
2.1/2"	76,1 (3.04")	65	CL 10	M8	77 (3.03")	85 (3.35")	101 (3.98")	30 (1.18")	19,9 (.78")	43 (1.69")	19,9 (.78")	43 (1.69")			
			CZF 10				98 (3.86")	28 (1.10")	16,9 (.67")	16,9 (.67")					
			XCL 10	M10	77 (3.03")	87 (3.43")	110 (4.33")	40 (1.57")	28,9 (1.14")	43 (1.69")	28,9 (1.14")	43 (1.69")			
			CM 10				106 (4.17")	36 (1.42")	24,9 (.98")	24,9 (.98")					
			XCM 10				M12	77 (3.03")	89 (3.50")	128 (5.04")	60 (2.36")	46,9 (1.85")	43 (1.69")	46,9 (1.85")	43 (1.69")
			XCP 10							113 (4.45")	30 (1.18")	16,1 (.63")	52,45 (2.06")	19,1 (.75")	49,45 (1.95")
3"	88,9 (3.56")	80	CL 11	M8	89 (3.50")	97 (3.82")	113 (4.45")	30 (1.18")	16,1 (.63")	52,45 (2.06")	19,1 (.75")	49,45 (1.95")			
			CZF 11				110 (4.33")	28 (1.10")	13,1 (.52")	16,1 (.63")					
			XCL 11	M10	89 (3.50")	99 (3.90")	122 (4.80")	40 (1.57")	25,1 (.99")	52,45 (2.06")	28,1 (1.11")	49,45 (1.95")			
			CM 11				118 (4.65")	36 (1.42")	21 (.83")	24 (.94")					
			XCM 11				M12	89 (3.50")	101 (3.98")	140 (5.51")	60 (2.36")	43,1 (1.70")	52,45 (2.06")	46,1 (1.81")	49,45 (1.95")
			XCP 11							113 (4.45")	30 (1.18")	16,1 (.63")	52,45 (2.06")	19,1 (.75")	49,45 (1.95")



ROUND U-BOLT



Code CL / CM / CP
(Material S275JRC - Finishing Zinc Plated)

Code CZF
(Material S275JRC - Finishing Crapal)

Code XCL / XCM
(Material AISI 304L - Finishing Washed)

Code XCP
(Material AISI 316L - Finishing Washed)

O.D. ØD1		Nominal Diameter DN	Code	Thread D	A	L1	H1	H2	with BC		with BL				
nominal bore pipe	mm								H3	H4	H3	H4			
3.1/2"	102 (4.02")	90	CL 12	M8	102 (4.02")	110 (4.33")	130 (5.12")	35 (1.38")	20 (.79")	18 (.71")	61 (2.40")				
			CZF 12				127 (5")	35 (1.38")	17 (.67")	15 (.60")					
			XCL 12	M12	102 (4.02")	114 (4.49")	142 (5.59")	50 (1.97")	32 (1.26")	59 (2.32")	30 (1.18")				
			CM 12				137 (5.39")	45 (1.77")	27 (1.06")	25 (.98")	61 (2.40")				
			XCP 12				159 (6.26")	70 (2.76")	49 (1.93")	59 (2.32")	47 (1.85")	61 (2.40")			
4"	114,3 (5.57")	100	CL 13	M8	115 (4.53")	123 (4.84")	142 (5.59")	35 (1.38")	19,7 (.78")	65,15 (2.56")	17,7 (.70")	67,15 (2.64")			
			XCL 13				139 (5.47")	35 (1.38")	16,7 (.66")	14,7 (.58")	67,15 (2.64")				
			CZF 13	M12	115 (4.53")	125 (4.92")	142 (5.59")	35 (1.38")	19 (.75")	65,15 (2.56")	17 (.67")	67,15 (2.64")			
			CM 13				156 (6.14")	50 (1.97")	33,7 (1.33")	65,15 (2.56")	31,7 (1.25")	67,15 (2.64")			
			XCP 13				151 (5.94")	45 (1.77")	28,7 (1.13")	26,7 (1.05")	67,15 (2.64")				
			CP 13	M16	115 (4.53")	131 (5.16")	173 (6.81")	70 (2.76")	50,7 (2")	65,15 (2.56")	48,7 (1.92")	67,15 (2.64")			
CL 14	M8	140 (5.51")	148 (5.83")				169 (6.65")	35 (1.38")	21,3 (.84")	78,85 (3.10")	19,3 (.76")	79,85 (3.14")			
XCL 14				165 (6.50")	35 (1.38")	17,3 (.68")	15,3 (.60")	79,85 (3.14")							
5"	139,7 (5.59")	125	CZF 14	M10	140 (5.51")	150 (5.91")	169 (6.65")	35 (1.38")	21 (.83")	78,85 (3.10")	19 (.75")	79,85 (3.14")			
			CM 14				180 (7.09")	50 (1.97")	32,3 (1.27")	30,3 (1.19")	79,85 (3.14")				
			XCP 14	M12	140 (5.51")	152 (5.98")	175 (6.89")	45 (1.77")	27,3 (1.07")	78,85 (3.10")	25,3 (1")	79,85 (3.14")			
			CP 14				M16	140 (5.51")	156 (6.14")	197 (7.76")	70 (2.76")	49,3 (1.94")	78,85 (3.10")	47,3 (1.86")	79,85 (3.14")
			CL 15							M10	168 (6.61")	178 (7.01")	202 (7.95")	45 (1.77")	26 (1.02")
CZF 15	196 (7.72")	45 (1.77")	20 (.79")	18 (.71")	94 (3.70")										
6"	168 (6.61")	150	CM 15	M12	168 (6.61")	180 (7.09")	208 (8.19")	50 (1.97")	32 (1.26")	92 (3.62")	30 (1.18")	94 (3.70")			
			XCL 15				M16	168 (6.61")	184 (7.24")	225 (8.86")	70 (2.76")	49 (1.93")	92 (3.62")	47 (1.85")	94 (3.70")
			CP 15												



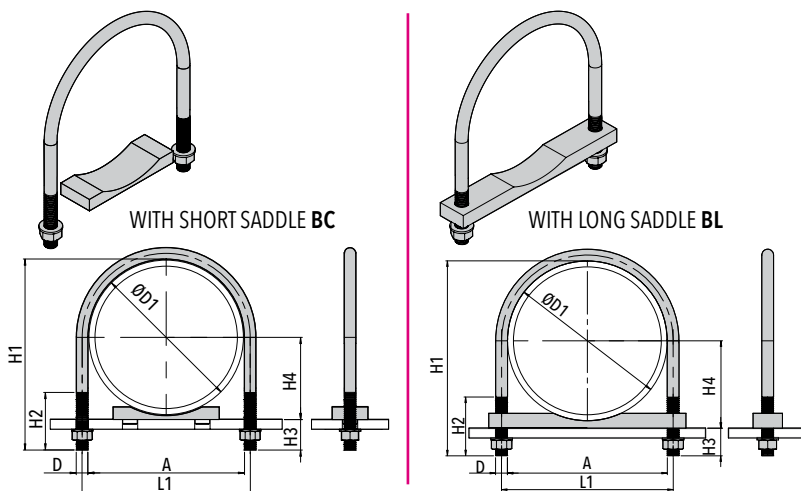
ROUND U-BOLT

Code CL / CM / CP
(Material S275JRC - Finishing Zinc Plated)

Code CZF
(Material S275JRC - Finishing Crapal)

Code XCL / XCM
(Material AISI 304L - Finishing Washed)

Code XCP
(Material AISI 316L - Finishing Washed)

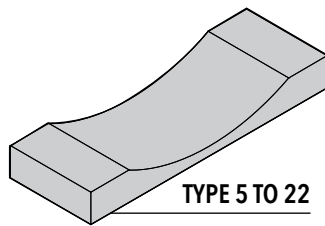


O.D. ØD1 nominal bore pipe	mm	Nominal Diameter DN	Code	Thread D	A	L1	H1	H2	with BC		with BL	
									H3	H4	H3	H4
8"	219 (8.62")	200	CL 16	M10	220 (8.66")	230 (9.06")	254 (10")	45 (1.77")	27 (1.06")	117,5 (4.63")	25 (.98")	119,5 (4.70")
			CZF 16									
			XCL 16	M16	220 (8.66")	236 (9.29")	267 (10.51")	60 (2.36")	40 (1.57")	118 (4.65")	38 (1.50")	120 (4.72")
			CM 16									
10"	273 (10.92")	250	CL 17	M10	274 (10.78")	284 (11.18")	308 (12.13")	45 (1.77")	27 (1.06")	144 (5.67")	25 (.98")	146 (5.75")
			CZF 17									
			XCL 17	M16	274 (10.78")	290 (11.42")	321 (12.64")	60 (2.36")	39 (1.54")	145 (5.71")	37 (1.46")	147 (5.79")
			CM 17									
12"	324 (12.76")	350	CL 18	M16	324 (12.76")	340 (13.39")	368 (14.49")	60 (2.36")	36 (1.42")	170 (6.69")	29 (1.14")	177 (6.97")
			CM 18									
			CP 18	M24	324 (12.76")	348 (13.70")	396 (15.59")	90 (3.54")	64 (2.52")	170 (6.69")	57 (2.24")	177 (6.97")
			CL 19									
14"	356 (14.02")	350	CM 19	M20	356 (14.02")	376 (14.80")	411 (16.18")	70 (2.76")	47 (1.85")	186 (7.32")	40 (1.57")	193 (7.60")
			CP 19									
			CL 20	M16	408 (16.06")	424 (16.69")	452 (17.80")	60 (2.36")	36 (1.42")	211,2 (8.31")	29 (1.14")	218,2 (8.59")
			CM 20									
CP 20	M24	408 (16.06")	432 (17.01")	480 (18.90")	90 (3.54")	65,6 (2.58")	211,2 (8.31")	58,6 (2.31")	218,2 (8.59")			
16"										406,4 (16.26")	400	CM 21
	CP 21	M24	460 (18.11")	484 (19.06")	532 (20.94")	90 (3.54")	66,8 (2.63")	236,6 (9.31")	59,8 (2.35")			243,6 (9.59")
	CM 22											
	CP 22	M24	510 (20.08")	534 (21.02")	582 (22.91")	90 (3.54")	66 (2.60")	262 (10.31")	59 (2.32")			269 (10.59")
18"	457,2 (18")									450	CM 23	
		CP 23	M24	612 (24.09")	636 (25.04")	684 (26.93")	90 (3.54")	--	--		59,4 (2.34")	319,8 (12.59")



BC SHORT PLASTIC PIPE SADDLE

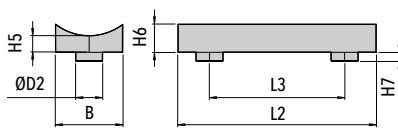
Code	O.D. ØD1		L2	L3	B	H5	H6	H7	ØD2
	mm	nominal bore pipe							
BC05÷8	26,9	3/4"	35 (1.38")	25 (.98")	24 (.94")	5 (.19")	8 (.31")	5 (.19")	8 (.31")
	33,7	1"	35 (1.38")	25 (.98")	24 (.94")	5 (.19")	8 (.31")	5 (.19")	8 (.31")
	42,4	1.1/4"	35 (1.38")	25 (.98")	24 (.94")	5 (.19")	8 (.31")	5 (.19")	8 (.31")
	48,3	1.1/2"	35 (1.38")	25 (.98")	24 (.94")	5 (.19")	8 (.31")	5 (.19")	8 (.31")
BC09÷10	60,3	2"	38 (1.49")	25 (.98")	50 (1.96")	5 (.19")	10 (.39")	6 (.23")	10 (.39")
	76,1	2.1/2"	38 (1.49")	25 (.98")	50 (1.96")	5 (.19")	10 (.39")	6 (.23")	10 (.39")
BC11÷14	88,9	3"	75 (2.95")	40 PP / 40.5 PA (1.57" PP / 1.59" PA)	70 (2.75")	8 (.31")	17 (.67")	10 (.39")	15 (.59")
	102	3.1/2"	75 (2.95")	40 PP / 40.5 PA (1.57" PP / 1.59" PA)	70 (2.75")	8 (.31")	17 (.67")	10 (.39")	15 (.59")
	114,3	4"	75 (2.95")	40 PP / 40.5 PA (1.57" PP / 1.59" PA)	70 (2.75")	8 (.31")	17 (.67")	10 (.39")	15 (.59")
BC15÷17	139,7	5"	75 (2.95")	40 PP / 40.5 PA (1.57" PP / 1.59" PA)	70 (2.75")	8 (.31")	17 (.67")	10 (.39")	15 (.59")
	168	6"	140 (5.51")	90 PP / 91 PA (3.54" PP / 3.58" PA)	75 (2.95")	8 (.31")	26 (1.02")	10 (.39")	25 (.98")
	219	8"	140 (5.51")	90 PP / 91 PA (3.54" PP / 3.58" PA)	75 (2.95")	8 (.31")	26 (1.02")	10 (.39")	25 (.98")
BC18÷22	273	10"	140 (5.51")	90 PP / 91 PA (3.54" PP / 3.58" PA)	75 (2.95")	8 (.31")	26 (1.02")	10 (.39")	25 (.98")
	324	12"	220 (8.66")	150 PP / 152 PA (5.90" PP / 5.98" PA)	75 (2.95")	8 (.31")	32 (1.26")	10 (.39")	30 (1.18")
	356	14"	220 (8.66")	150 PP / 152 PA (5.90" PP / 5.98" PA)	75 (2.95")	8 (.31")	32 (1.26")	10 (.39")	30 (1.18")
BC18÷22	406,4	16"	220 (8.66")	150 PP / 152 PA (5.90" PP / 5.98" PA)	75 (2.95")	8 (.31")	32 (1.26")	10 (.39")	30 (1.18")
	457,2	18"	220 (8.66")	150 PP / 152 PA (5.90" PP / 5.98" PA)	75 (2.95")	8 (.31")	32 (1.26")	10 (.39")	30 (1.18")
	508	20"	220 (8.66")	150 PP / 152 PA (5.90" PP / 5.98" PA)	75 (2.95")	8 (.31")	32 (1.26")	10 (.39")	30 (1.18")



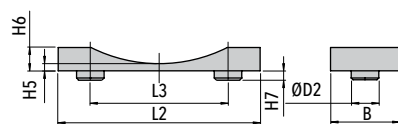
TYPE 5 TO 22

Code BC (Material PP - PA)

TYPE 5 TO 8

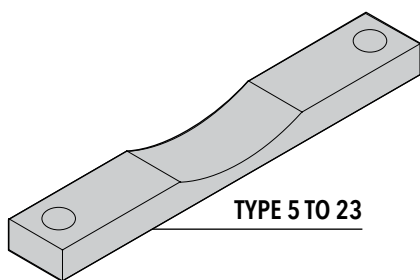


TYPE 9 TO 22



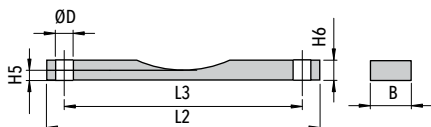


BL LONG PLASTIC PIPE SADDLE



TYPE 5 TO 23

Code BL (Material PP - PA)



Code	O.D. ØD1		L2	L3	B	H5	H6	ØD
	mm	nominal bore pipe						
BL05	26,9	3/4"	70 (2.75")	37 (1.45")	30 (1.18")	5 (.19")	12 (.47")	11 (.43")
BL06	33,7	1"	75 (2.95")	43 (1.69")	30 (1.18")	5 (.19")	12 (.47")	11 (.43")
BL07	42,4	1.1/4"	75 (2.95")	52 (2.04")	30 (1.18")	5 (.19")	12 (.47")	11 (.43")
BL08	48,3	1.1/2"	95 (3.74")	60 (2.36")	35 (1.37")	5 (.19")	15 (.59")	13 (.51")
BL09	60,3	2"	95 (3.74")	72 (2.83")	35 (1.37")	5 (.19")	15 (.59")	13 (.51")
BL10	76,1	2.1/2"	115 (4.52")	88 (3.46")	35 (1.37")	5 (.19")	15 (.59")	13 (.51")
BL11	88,9	3"	135 (5.31")	100 (3.93")	35 (1.37")	5 (.19")	15 (.59")	13 (.51")
BL12	102	3.1/2"	150 (5.90")	117 (4.60")	40 (1.57")	10 (.39")	20 (.79")	18 (.70")
BL13	114,3	4"	185 (7.28")	131" (5.15")	40 (1.57")	10 (.39")	20 (.79")	18 (.70")
BL14	139,7	5"	210 (8.26")	154,5 (6.08")	40 (1.57")	10 (.39")	20 (.79")	18 (.70")
BL15	168	6"	220 (8.66")	182 (7.16")	40 (1.57")	10 (.39")	20 (.79")	18 (.70")
BL16	219	8"	280 (11.02")	240 (9.45")	50 (1.96")	10 (.39")	25 (.98")	22 (.86")
BL17	273	10"	350 (13.77")	294 (11.57")	50 (1.96")	10 (.39")	25 (.98")	22 (.86")
BL18	324	12"	420 (16.53")	348 (13.70")	60 (2.36")	15 (.59")	30 (1.18")	26 (1.02")
BL19	356	14"	460 (18.11")	380 (14.96")	60 (2.36")	15 (.59")	30 (1.18")	26 (1.02")
BL20	406,4	16"	510 (20.07")	432 (17")	60 (2.36")	15 (.59")	30 (1.18")	26 (1.02")
BL21	457,2	18"	550 (21.65")	484 (19.05")	60 (2.36")	15 (.59")	30 (1.18")	26 (1.02")
BL22	508	20"	600 (23.62")	534 (21.02")	60 (2.36")	15 (.59")	30 (1.18")	26 (1.02")
BL23	609,6	24"	700 (27.56")	636 (25.04")	60 (2.36")	15 (.59")	30 (1.18")	26 (1.02")

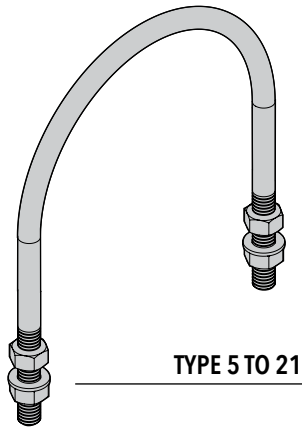


CD

U-BOLT

DIN 3570

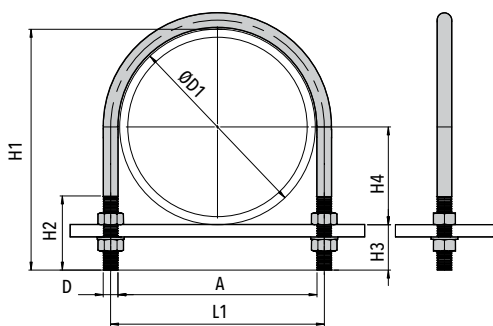
PIPE CLAMPS
U-BOLT SERIES



TYPE 5 TO 21

130

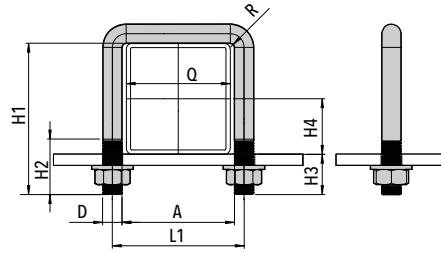
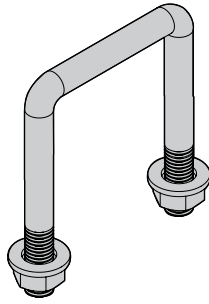
Code CD
(Material Carbon Steel S 275 JR
Finishing Zinc Plated)



Code	O.D. ØD1		A	L1	H1	H2	H3	H4	D
	mm	nominal bore pipe							
CD 05	26,9	3/4"	30 (1.18")	40 (1.57")	60 (2.36")	40 (1.57")	33,1 (1.30")	13,5 (.53")	M10
CD 06	33,7	1"	38 (1.49")	48 (1.89")	66 (2.60")	40 (1.57")	32,3 (1.27")	16,9 (.66")	M10
CD 07	42,4	1.1/4"	46 (1.81")	56 (2.20")	76 (2.99")	50 (1.97")	33,6 (1.32")	21,2 (.83")	M10
CD 08	48,3	1.1/2"	52 (2.04")	62 (2.44")	82 (3.22")	50 (1.97")	33,7 (1.32")	24,2 (.95")	M10
CD 09	60,3	2"	64 (2.52")	76 (2.99")	97 (3.82")	50 (1.97")	36,7 (1.44")	35,2 (1.38")	M12
CD 10	76,1	2.1/2"	82 (3.23")	94 (3.70")	113 (4.45")	50 (1.97")	36,9 (1.45")	30,2 (1.19")	M12
CD 11	88,9	3"	94 (3.70")	106 (4.17")	126 (4.96")	50 (1.97")	37,1 (1.46")	44,5 (1.75")	M12
CD 12	102	3.1/2"	120 (4.72")	136 (5.35")	155 (6.10")	60 (2.36")	40,7 (1.60")	57,2 (2.25")	M16
CD 13	114,3	4"	148 (5.82")	164 (6.45")	175 (6.89")	60 (2.36")	35,3 (1.39")	69,9 (2.75")	M16
CD 14	139,7	5"	176 (6.93")	192 (7.56")	201 (7.91")	60 (2.36")	32,7 (1.28")	84,2 (3.31")	M16
CD 15	168	6"	202 (7.95")	218 (8.58")	233 (9.17")	60 (2.36")	39,3 (1.54")	96,9 (3.81")	M16
CD 16	219	8"	228 (8.97")	248 (9.76")	263 (10.35")	70 (2.75")	43,9 (1.73")	109,6 (4.31")	M20
CD 17	273	10"	282 (11.10")	302 (11.89")	314 (12.36")	70 (2.75")	41 (1.61")	136,5 (5.37")	M20
CD 18	324	12"	332 (13.07")	352 (13.86")	365 (14.37")	70 (2.75")	41 (1.61")	162 (6.37")	M20
CD 19	356	14"	378 (14.88")	402 (15.82")	411 (16.18")	70 (2.75")	55 (2.16")	178 (7")	M24
CD 20	406,4	16"	428 (16.85")	452 (17.79")	463 (18.23")	70 (2.75")	56,6 (2.23")	203,2 (8")	M24
CD 21	457,2	18"	530 (20.86")	554 (21.81")	565 (22.24")	70 (2.75")	57 (2.24")	254 (10")	M24



SQUARE U-BOLT

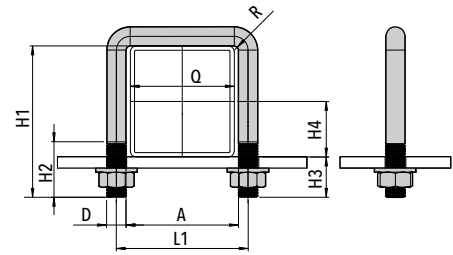
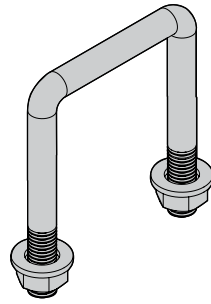


Code **CQL / CQM / CQP / CQR**
(Material S 275 JR
Finishing Zinc Plated)

Pipe Size Q mm (in)	Code	Thread D	A	L1	H1	H2	H3	H4	R
30x30 (1.18"x1.18")	CQL 03	M8		39 (1.54")	50 (1.97")	25 (.98")	20 (.79")	15 (.59")	4 (.16")
	CQM 03	M10	31 (1.22")	41 (1.61")	52 (2.05")	30 (1.18")	22 (.87")	15 (.59")	5 (.20")
	CQP 03	M12		43 (1.69")	56 (2.20")	35 (1.38")	26 (1.02")	15 (.59")	6 (.24")
40x40 (1.57"x1.57")	CQL 04	M8		49 (1.93")	60 (2.36")	25 (.98")	20 (.79")	20 (.79")	4 (.16")
	CQM 04	M10	41 (1.61")	51 (2.01")	62 (2.44")	30 (1.18")	22 (.87")	20 (.79")	5 (.20")
	CQP 04	M12		53 (2.09")	66 (2.60")	35 (1.38")	26 (1.02")	20 (.79")	6 (.24")
50x50 (1.97"x1.97")	CQL 05	M8		59 (2.32")	70 (2.76")	25 (.98")	20 (.79")	25 (.98")	4 (.16")
	CQM 05	M10	51 (2.01")	61 (2.40")	72 (2.83")	30 (1.18")	2 (.87")	25 (.98")	5 (.20")
	CQP 05	M12		63 (2.48")	76 (2.99")	35 (1.38")	26 (1.02")	25 (.98")	6 (.24")
60x60 (2.36"x2.36")	CQL 06	M10		71 (2.80")	82 (3.23")	30 (1.18")	22 (.87")	30 (1.18")	5 (.20")
	CQM 06	M12		73 (2.87")	86 (3.39")	35 (1.38")	26 (1.02")	30 (1.18")	6 (.24")
	CQP 06	M14	61 (2.40")	75 (2.95")	90 (3.54")	40 (1.57")	30 (1.18")	30 (1.18")	7 (.28")
	CQR 06	M16		77 (3.03")	94 (3.70")	50 (1.97")	34 (1.34")	30 (1.18")	31 (.31")
70x70 (2.76"x2.76")	CQL 07	M10		81 (3.19")	92 (3.62")	30 (1.18")	22 (.87")	35 (1.38")	5 (.20")
	CQM 07	M12		83 (3.27")	96 (3.78")	35 (1.38")	26 (1.02")	35 (1.38")	6 (.24")
	CQP 07	M14	71 (2.80")	85 (3.35")	100 (3.94")	40 (1.57")	30 (1.18")	35 (1.38")	7 (.28")
	CQR 07	M16		87 (3.43")	104 (4.09")	50 (1.97")	34 (1.34")	35 (1.38")	8 (.31")



SQUARE U-BOLT



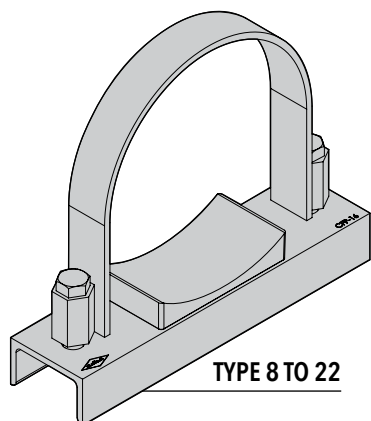
Code **CQL / CQM / CQP / CQR**
(Material S 275 JR
Finishing Zinc Plated)

Pipe Size Q mm (in)	Code	Thread D	A	L1	H1	H2	H3	H4	R
80x80 (3.15"x3.15")	CQL 08	M10	81 (3.19")	91 (3.58")	102 (4.02")	30 (1.18")	22 (.87")	40 (1.57")	5 (.20")
	CQM 08	M12		93 (3.66")	106 (4.17")	35 (1.38")	26 (1.02")	40 (1.57")	6 (.24")
	CQP 08	M14		95 (3.74")	110 (4.33")	40 (1.57")	30 (1.18")	40 (1.57")	7 (.28")
	CQR 08	M16		97 (3.82")	114 (4.49")	50 (1.97")	34 (1.34")	40 (1.57")	8 (.31")
90x90 (3.54"x3.54")	CQL 09	M10	91 (3.58")	101 (3.98")	112 (4.41")	30 (1.18")	22 (.87")	45 (1.77")	5 (.20")
	CQM 09	M12		103 (4.06")	116 (4.57")	35 (1.38")	26 (1.02")	45 (1.77")	6 (.24")
	CQP 09	M14		105 (4.13")	120 (4.72")	40 (1.57")	30 (1.18")	45 (1.77")	7 (.28")
	CQR 09	M16		107 (4.21")	124 (4.89")	50 (1.97")	34 (1.34")	45 (1.77")	8 (.31")
100x100 (3.94"x3.94")	CQL 10	M10	101 (3.98")	111 (4.37")	122 (4.80")	30 (1.18")	22 (.87")	50 (1.97")	5 (.20")
	CQM 10	M12		113 (4.45")	126 (4.96")	35 (1.38")	26 (1.02")	50 (1.97")	6 (.24")
	CQP 10	M14		115 (4.53")	130 (5.12")	40 (1.57")	30 (1.18")	50 (1.97")	7 (.28")
	CQR 10	M16		117 (4.61")	134 (5.28")	50 (1.97")	34 (1.34")	50 (1.97")	8 (.31")
110x110 (4.33"x4.33")	CQR 11	M16	111 (4.37")	127 (5")	144 (5.67")	50 (1.97")	34 (1.34")	55 (2.17")	8 (.31")
120x120 (4.72"x4.72")	CQR 12	M16	121 (4.76")	137 (5.39")	154 (6.06")	50 (1.97")	34 (1.34")	60 (2.36")	8 (.31")

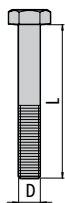
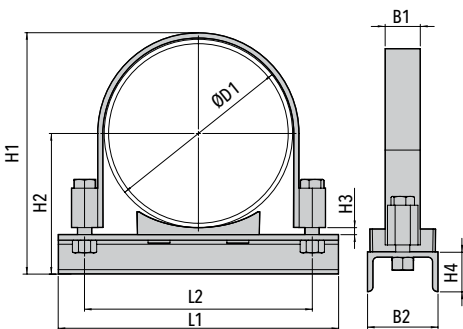


CFP FLAT STEEL U-BOLT

STAINLESS STEEL "U" PROFILE (DIN 1026)
WITH SHORT PLASTIC SADDLE BC
(see page 128)



Code CFP
(Material Galvanized Hexavalent
Chromium-free Steel St630)



Code	O.D. ØD1		L1	L2	H1	H2	H3	B1	B2xH4	Screw DxL
	mm	nominal bore pipe								
CFP 08	48,3	1.1/2"	100 (3.94")	76 (2.99")	95 (3.74")	67 (2.64")	5 (.20")	20x3 (.78"x.12")	50x38 (1.97"x1.50")	M10x40
CFP 09	60,3	2"	115 (4.53")	88 (3.46")	106 (4.17")	73,2 (2.88")	5 (.20")	20x3 (.78"x.12")	50x38 (1.97"x1.50")	
CFP 10	76,1	2.1/2"	132 (5.20")	104 (4.09")	122 (4.80")	81 (3.19")	5 (.20")	20x3 (.78"x.12")	50x38 (1.97"x1.50")	
CFP 11	88,9	3"	160 (6.30")	122 (4.80")	146 (5.75")	97,5 (3.84")	8 (.31")	40x4 (1.57"x.16")	80x45 (3.15"x1.77")	M12x55
CFP 12	102	3.1/2"	170 (6.69")	134 (5.27")	159 (6.26")	104 (4.09")	8 (.31")	40x4 (1.57"x.16")	80x45 (3.15"x1.77")	
CFP 13	114,3	4"	180 (7.08")	147 (5.79")	171 (6.73")	110 (4.33")	8 (.31")	40x4 (1.57"x.16")	80x45 (3.15"x1.77")	
CFP 14	139,7	5"	210 (8.27")	172 (6.77")	197 (7.76")	123 (4.84")	8 (.31")	40x4 (1.57"x.16")	80x45 (3.15"x1.77")	M16x75
CFP 15	168	6"	275 (10.83")	211 (8.31")	230 (9.06")	137 (5.39")	8 (.31")	40x6 (1.57"x.24")	80x45 (3.15"x1.77")	
CFP 16	219	8"	320 (12.60")	261 (1.28")	280 (11.02")	162,5 (6.40")	8 (.31")	40x6 (1.57"x.24")	80x45 (3.15"x1.77")	
CFP 17	273	10"	385 (15.16")	330 (12.99")	334 (13.15")	189,5 (7.46")	8 (.31")	40x8 (1.57"x.31")	80x45 (3.15"x1.77")	M20x80
CFP 18	324	12"	450 (17.72")	382 (15.04")	390 (15.35")	215 (8.46")	8 (.31")	40x8 (1.57"x.31")	80x45 (3.15"x1.77")	
CFP 19	356	14"	480 (18.90")	420 (16.54")	421 (16.57")	235 (9.25")	12 (.47")	60x8 (2.36"x.31")	100x50 (3.94"x1.97")	
CFP 20	406,4	16"	550 (21.65")	470 (18.50")	472 (18.58")	261 (10.28")	12 (.47")	60x8 (2.36"x.31")	100x50 (3.94"x1.97")	M24x100
CFP 21	457,2	18"	585 (23.03")	520 (20.47")	523 (20.59")	286,5 (11.28")	12 (.47")	60x8 (2.36"x.31")	100x50 (3.94"x1.97")	
CFP 22	508	20"	630 (24.80")	570 (22.44")	574 (22.60")	312 (12.28")	12 (.47")	60x8 (2.36"x.31")	100x50 (3.94"x1.97")	